

50 Autumn Circle

Halton Hills

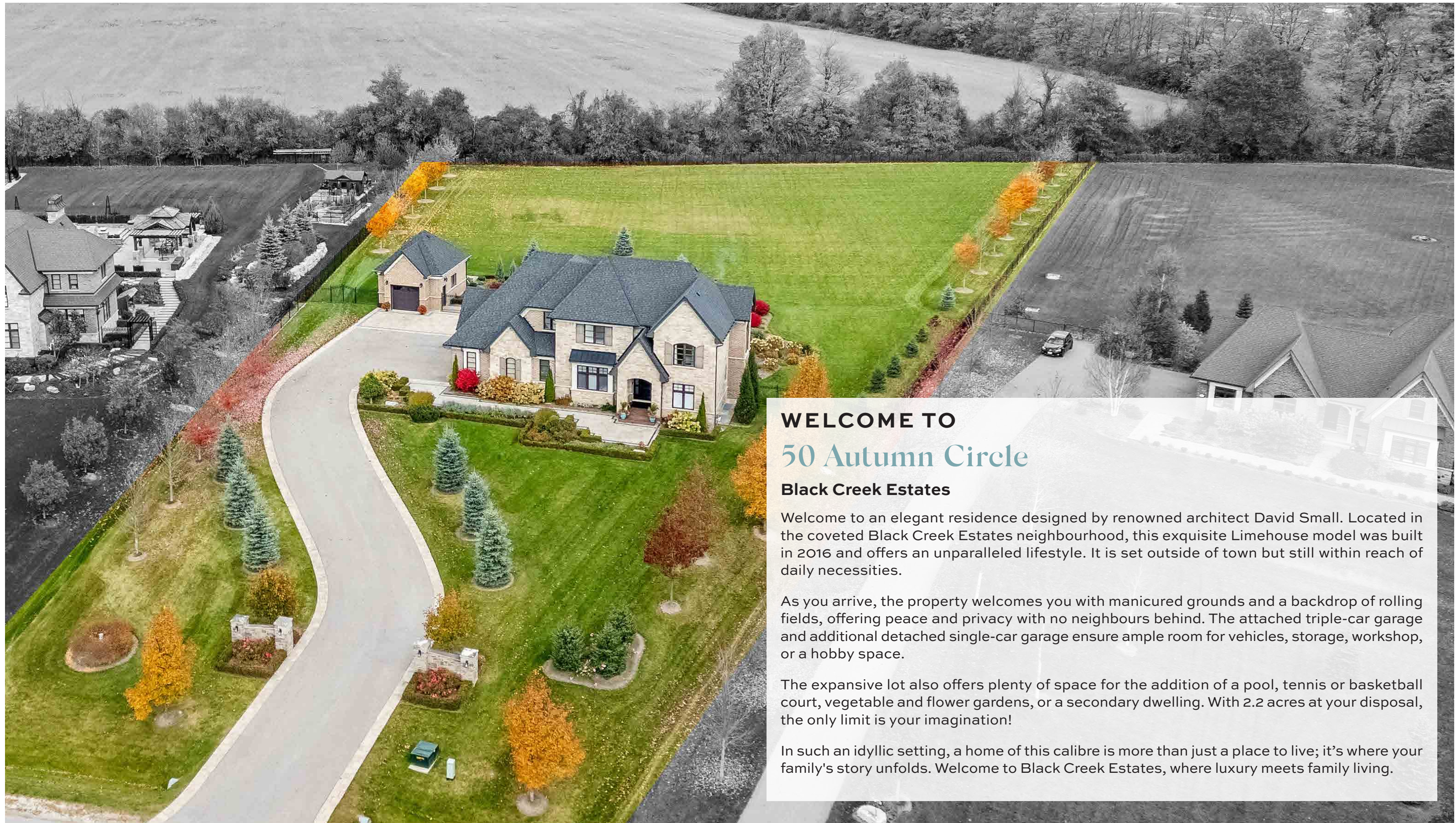
LH

COMPASSION
LED LUXURY
LISTING



LISA
HARTSINK BROKER

COMPASSION LED REALTY TEAM



WELCOME TO 50 Autumn Circle Black Creek Estates

Welcome to an elegant residence designed by renowned architect David Small. Located in the coveted Black Creek Estates neighbourhood, this exquisite Limehouse model was built in 2016 and offers an unparalleled lifestyle. It is set outside of town but still within reach of daily necessities.

As you arrive, the property welcomes you with manicured grounds and a backdrop of rolling fields, offering peace and privacy with no neighbours behind. The attached triple-car garage and additional detached single-car garage ensure ample room for vehicles, storage, workshop, or a hobby space.

The expansive lot also offers plenty of space for the addition of a pool, tennis or basketball court, vegetable and flower gardens, or a secondary dwelling. With 2.2 acres at your disposal, the only limit is your imagination!

In such an idyllic setting, a home of this calibre is more than just a place to live; it's where your family's story unfolds. Welcome to Black Creek Estates, where luxury meets family living.



DINING ROOM



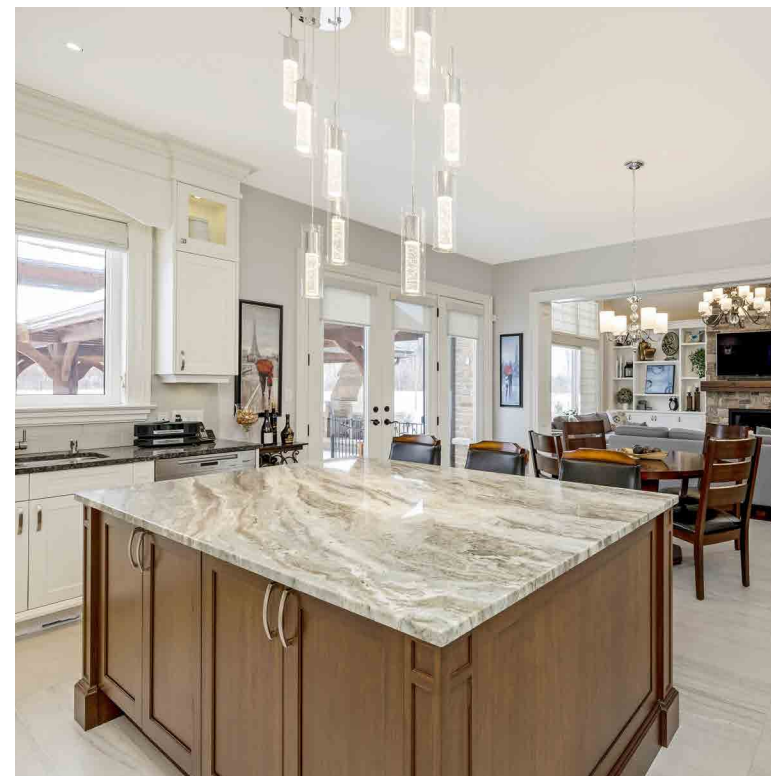
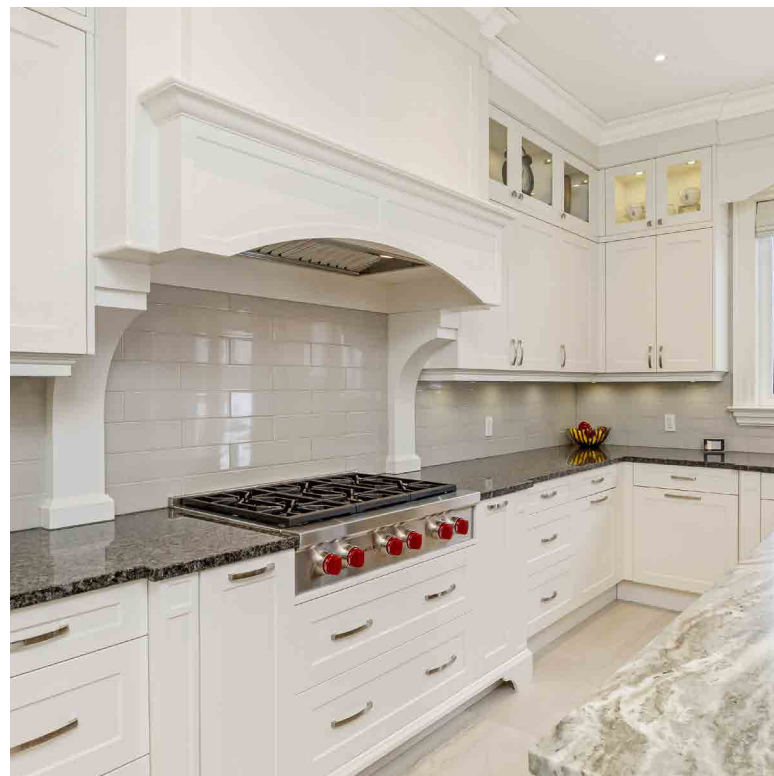
GREAT ROOM





KITCHEN & BREAKFAST

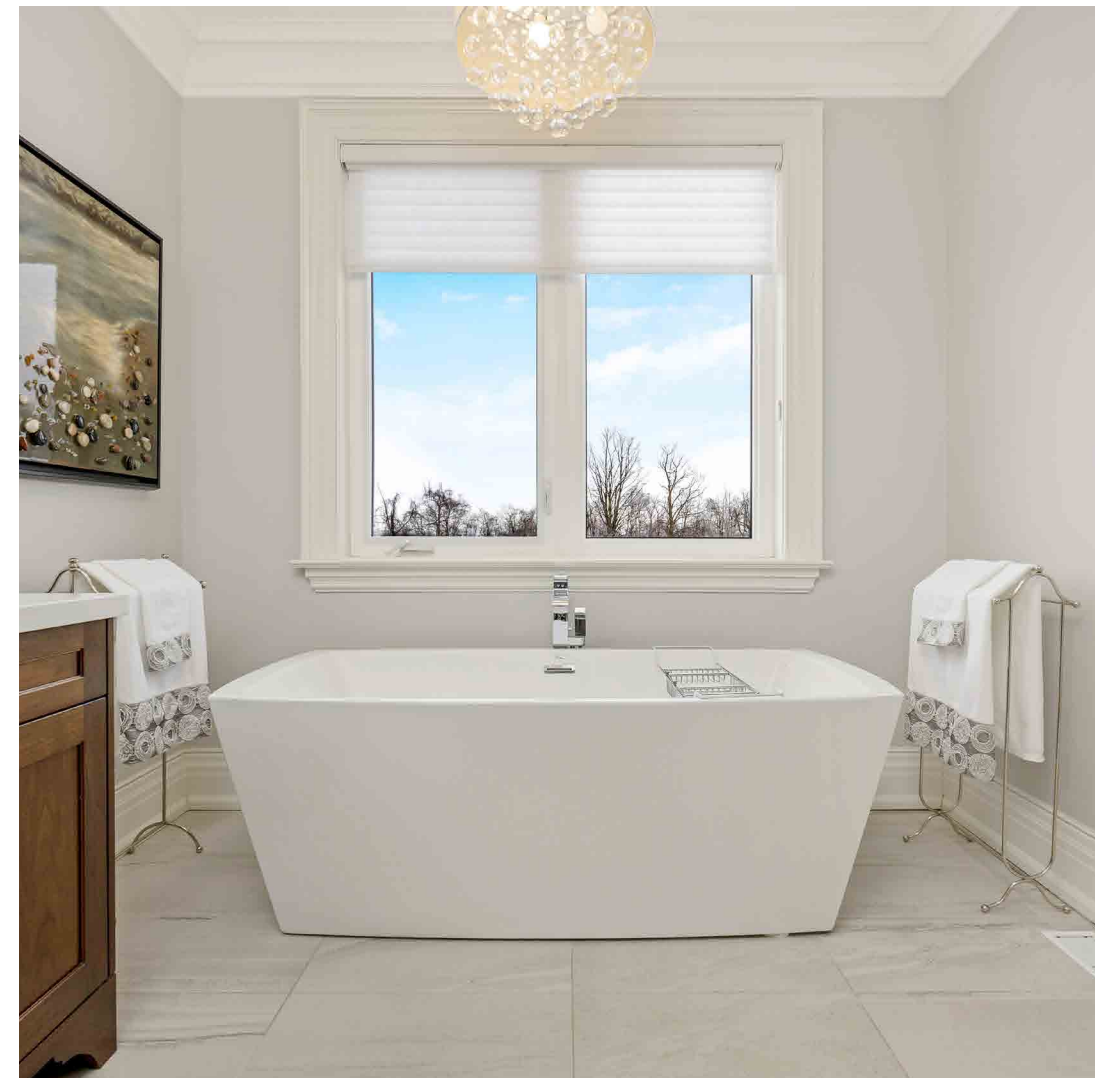
- Custom cabinetry by Pearl Kitchens with soft close hinges and slides, pull-out organizers and waste bins, undercabinet lighting, and more
- Stainless steel appliances including: Wolf wall oven, microwave, and gas cooktop; Subzero fridge; Miele dishwasher
- Stone countertops
- Walk-through servery to Dining Room with walk-in pantry
- Double door walkout to pavilion and yard





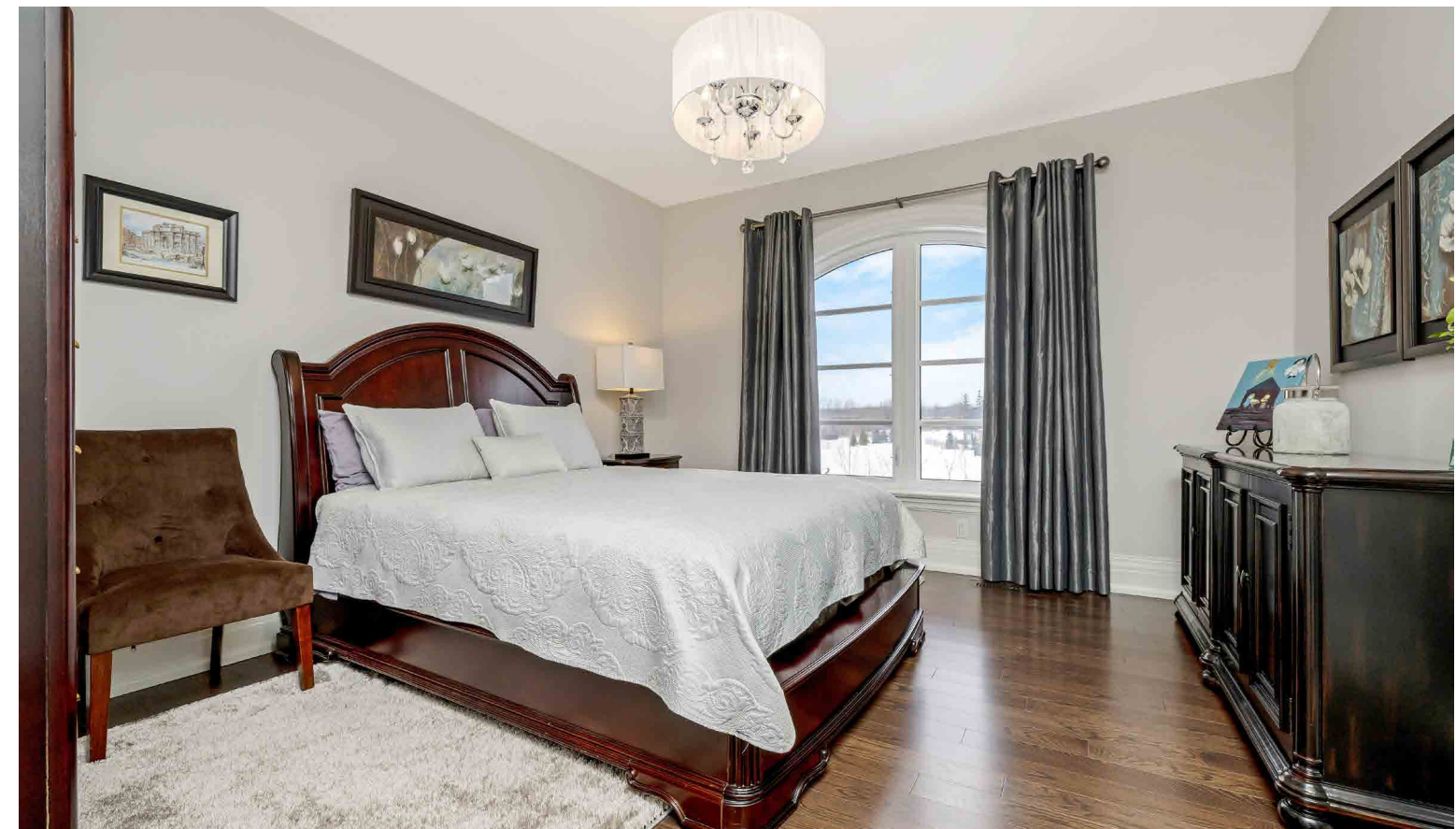
PRIMARY SUITE

- Hardwood flooring • His & hers walk-in closets with organizers
- 5 piece ensuite with Nuheat heated tile flooring, step-in glass shower, Mirolin freestanding soaker tub, and large double vanity with stone countertop



BEDROOMS

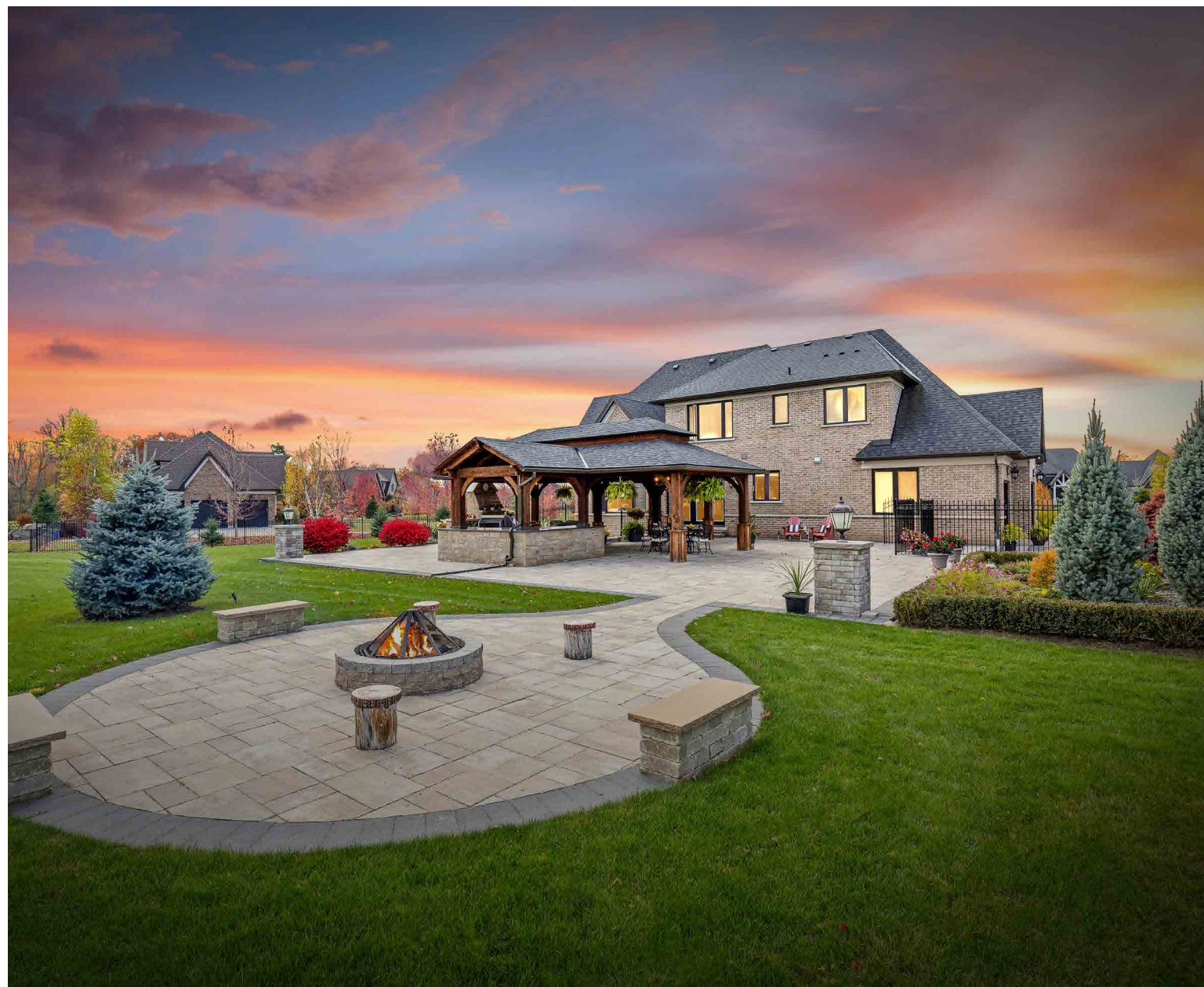
Three additional spacious bedrooms each offer the luxury of their own walk-in closets and private ensuite baths, ensuring everyone has their own private retreat.

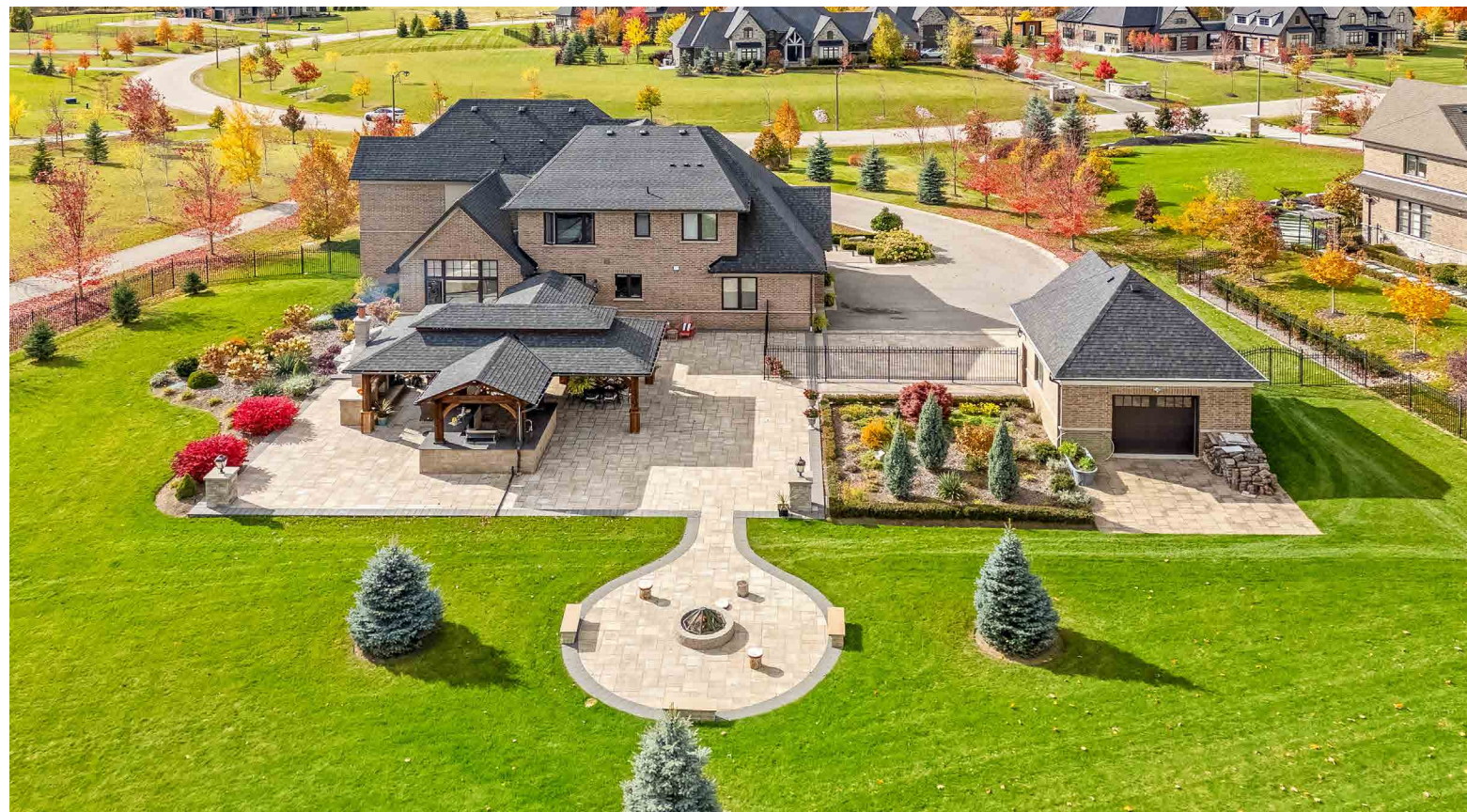
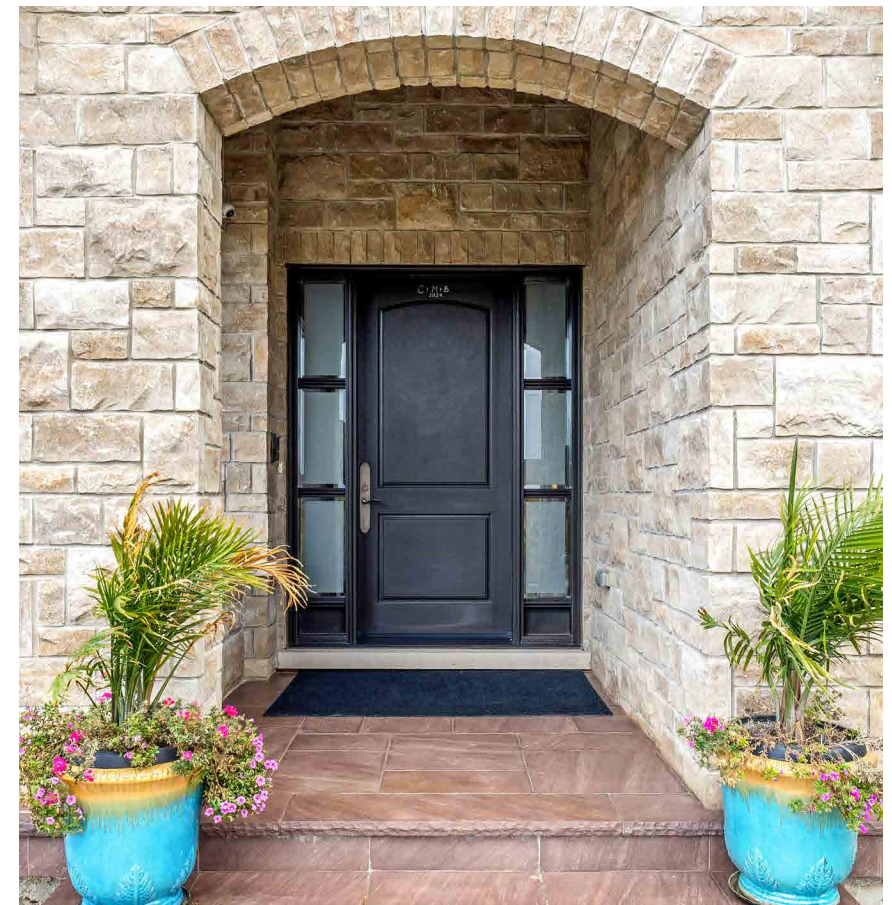


OUTDOOR OASIS

An Entertainer's Dream

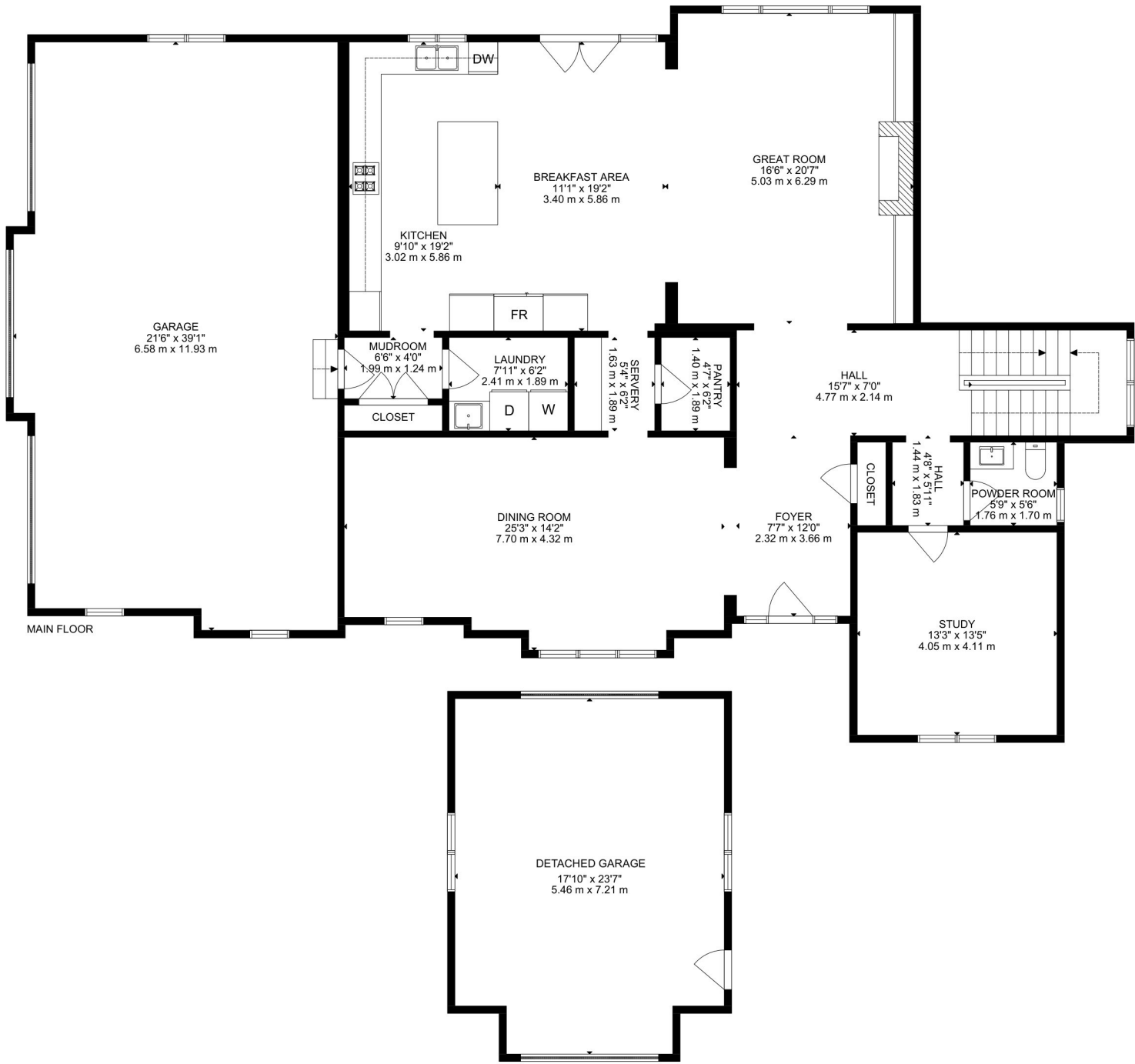
Walk out from the breakfast room through double glass doors with retractable screens to an entertainer's dream: a sprawling backyard pavilion. This outdoor haven boasts a sitting area with a cozy wood-burning fireplace, a dining area, and an outdoor kitchen with a built-in Napoleon BBQ, beverage and wine coolers, all set against the serene backdrop of wide open fields. Imagine hosting summer soirées under the stars.



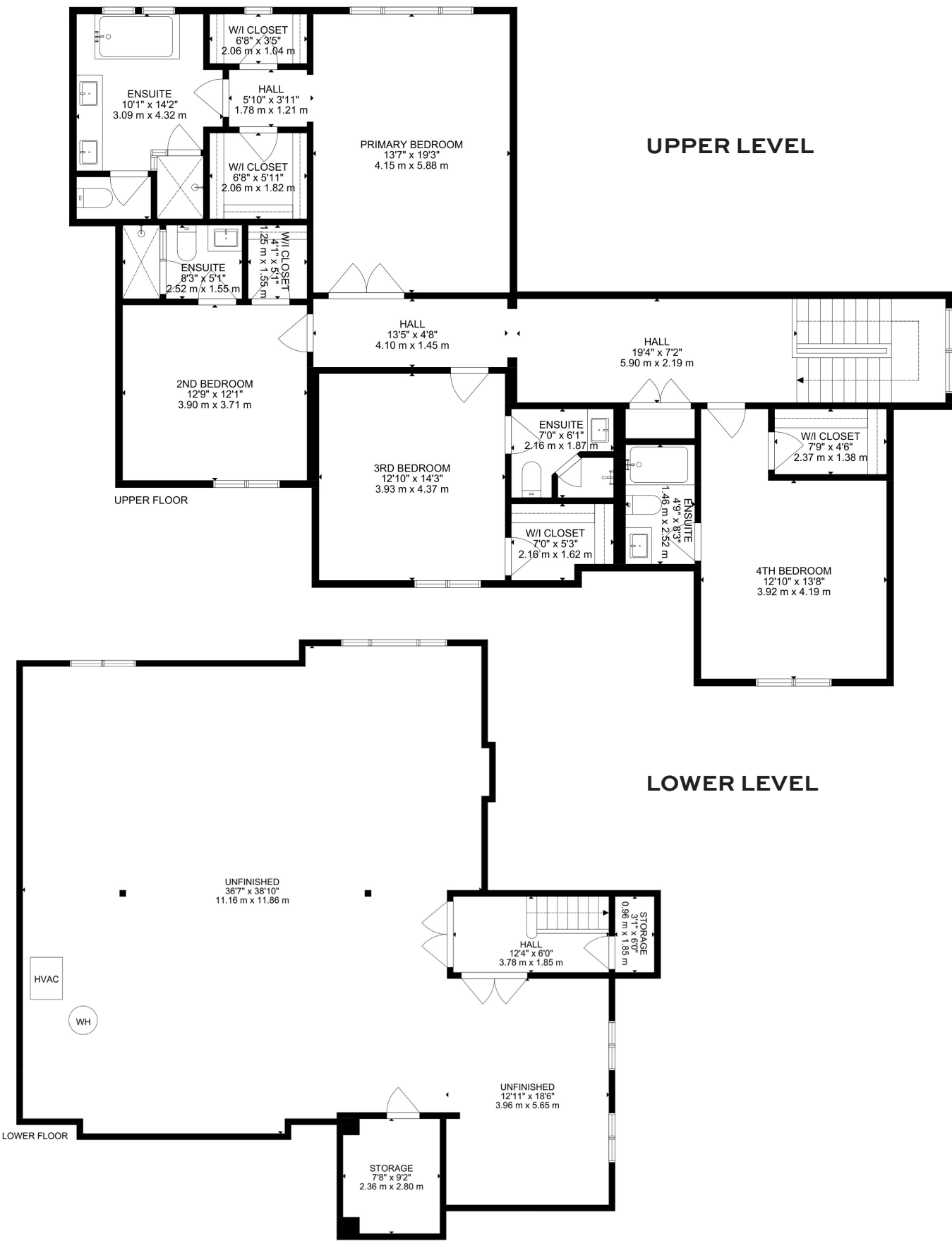


FLOOR PLANS

MAIN LEVEL



UPPER LEVEL



LOWER LEVEL

HOUSE FEATURES

MAIN LEVEL

FRONT ENTRANCE

- Landscaped front perennial gardens including hedge border, assorted shrubs and evergreens, hydrangeas, roses, and lavender
- Stone interlock patio and covered doorway
- Oversized entry door with sidelites
- Oversized tile flooring
- Coat closet
- Chandelier
- Crown moulding

DINING ROOM

- Hardwood flooring
- Walk-through servery to kitchen
- 2 windows overlooking front yard
- Chandelier
- Crown moulding

2 PIECE POWDER ROOM

- Oversized tile flooring
- Contrac toilet
- Single vanity with stone countertop and Contrac sink
- Window overlooking side yard
- Crown moulding
- Exhaust fan

STUDY

- French door entry
- Hardwood flooring
- Large window overlooking front yard
- Tray ceiling
- Recessed lighting

GREAT ROOM

- Open to breakfast area
- Hardwood flooring
- Large window overlooking backyard
- Gas fireplace with stone surround and wood mantle, flanked by custom built-in wall units with crown moulding
- Television wall mount
- Chandelier
- Cathedral ceiling

BREAKFAST AREA

- Open to great room and kitchen
- Oversized tile flooring
- Double door walkout to covered patio with retractable screens
- Chandelier

KITCHEN

- Open to breakfast area and great room
- Oversized tile flooring
- Large sit up centre island with contemporary pendant lighting
- Custom cabinetry by Pearl Kitchens with: sweepovac, soft close hinges and slides, pull-out organizers, pull-out waste bins, corner lazy Susan, display cabinets, custom decorative hood cover, undercabinet lighting, and crown moulding
- Stone countertops
- Double undermount sink with pull down faucet and Reverse Osmosis
- Oversized subway tile backsplash
- Window overlooking backyard
- Stainless steel appliances including: Wolf wall oven, microwave, and gas cooktop; Subzero fridge; Miele dishwasher

SERVERY

- Oversized tile flooring
- Walk-through to dining room
- Walk-in pantry
- Marvel bar fridge
- Cabinetry with stone countertop and undercabinet lighting
- Flush mount lighting

LAUNDRY ROOM

- Oversized tile flooring
- Closet and garage access from hall
- Samsung front load washer and dryer
- Cabinetry with oversized single sink and stone countertop
- Chandelier
- Exhaust fan

UPPER LEVEL

HALLWAY

- Hardwood stairs and railings, landing with chandelier and large window overlooking side yard
- Hardwood flooring
- Double linen closet
- Recessed lighting

PRIMARY BEDROOM

- Double door entryway
- Hardwood flooring
- His & hers walk-in closets with organizers
- Large window overlooking backyard
- Crown moulding

5 PIECE ENSUITE

- Nuheat heated tile flooring
- Separate toilet room with Contrac 1-piece toilet and exhaust fan
- Step-in glass shower with tile surround, bench, rainfall showerhead and recessed lighting
- Mirolin acrylic freestanding soaker tub with chandelier
- Large double vanity with stone countertop, Contrac sinks, and vanity lighting
- Window overlooking backyard
- Exhaust fan

2ND BEDROOM

- Hardwood flooring
- Walk-in closet with organizers
- Window overlooking front yard
- Chandelier

3 PIECE ENSUITE

- Tile flooring
- Contrac toilet
- Step-in glass shower with pebble floor, tile surround, and recessed lighting
- Single vanity with stone countertop, Contrac sink, and vanity lighting
- Exhaust fan

3RD BEDROOM

- Hardwood flooring
- Walk-in closet with organizers
- Window overlooking front yard
- Chandelier

3 PIECE ENSUITE

- Tile flooring
- Contrac toilet
- Corner step-in shower with tile surround and recessed lighting
- Single vanity with stone countertop, Contrac sink, and vanity lighting
- Exhaust fan
- Recessed lighting

4TH BEDROOM

- Hardwood flooring
- Walk-in closet with organizers
- Window overlooking front yard
- Chandelier

4 PIECE ENSUITE

- Tile flooring
- Contrac toilet
- Tub/shower combo with tile surround
- Single vanity with stone countertop, Contrac sink, and vanity lighting
- Exhaust fan

BASEMENT

- Hardwood stairs, landing with window facing side yard and recessed lighting
- Storage under stairs
- Unfinished basement with roughed-in 3 piece bathroom
- Cold room with motion sensor lighting
- Large above and below grade windows

Note: The information contained herein has been provided by the home owner and is to be verified by the Buyer.

COMPASSION • INTEGRITY • PERFORMANCE

LH

LISA HARTSINK

BROKER • LISAHARTSINK.COM

ADDITIONAL FEATURES

- 2.2 acre lot in Black Creek Estates
- Limehouse model, designed by architect David Small
- Long paved driveway with parking for more than 10 vehicles
- Finished and insulated 3 car attached garage with interior access, 3 windows, LiftMaster garage door openers and remotes, and Danby deep freezer
- Detached single car garage with entry doors to side and back, and loft storage with approx. 12 ft clearance
- Irrigation in all gardens, front lawn, and partial back lawn
- Exterior wall sconces and landscape lighting
- Fully fenced backyard with 2 gates
- Large interlock back patio and pavilion with dining area, sitting area with wood burning fireplace, and outdoor kitchen with stone countertops, built-in Napoleon barbecue, Frifer beverage fridge, Silhouette Professional wine cooler, single sink, storage, and chandeliers in each area
- Interlock firepit area with benches
- 10 ft ceilings and tall doors on main level, 9 ft ceilings on upper and lower levels
- Tall baseboards and custom window coverings throughout
- Keeprite gas furnace and air conditioner (approx. 2015)
- Lifebreath HRV (approx. 2015)
- Emerson thermostat
- Rheem hot water tank, rented (approx. 2016)
- Culligan water softener, owned (approx. 2016)
- PentAir Wellmate (approx. 2015)
- UV Dynamics system
- 5000L cistern (located in front)
- Sump pump and sewage ejector pump
- Drilled well (located in front)
- Septic (located in back)
- Windows and shingles (original)
- Security system, monitored
- Central vacuum
- 200 amp electrical panel



Note: The information contained herein has been provided by the home owner and is to be verified by the Buyer.



SCHOOLS

Halton District School Board		Halton Catholic District School Board	
ENGLISH			
JK - GR05	Limehouse Public School	JK - GR08	St. Francis of Assisi CES
GR06 - GR08	Stewarttown Middle School	GR09 - GR12	Christ the King CSS
GR09 - GR12	Georgetown District HS		
FRENCH IMMERSION			
GR02 - GR05	George Kennedy PS	GR01 - GR04	St. Catherine of Alexandria CES
GR06 - GR08	Centennial Public School	GR05 - GR08	St. Brigid CES
GR09 - GR12	Georgetown District HS	GR09 - GR12	Christ the King CSS

School boundary information can be confirmed at:
<https://www.hdsb.ca/schools/Pages/Find-My-Local-School.aspx>
<https://schoolplanning.hcdsb.org/find-your-school/>

LISA HARTSINK*Broker of Record*

For me, Quality not Quantity is the foundation of my success.

As my client, you are guaranteed a personalized Real Estate experience when working with my team! As I work with you from beginning to end of the process, I ensure constant communication and support. You are my number one priority. With my vast Real Estate knowledge and expertise, I will guide you with a compassionate, honest and patient approach, always allowing you to make the decisions that best work for you.

With an extensive sales and marketing background, and multiple Industry Designations, I ensure your home will be exposed to the market with the latest, most innovative practices available in the Real Estate Industry. Our marketing and communication plans incorporate some of the best, proven methods, to get your home sold.

I can help you buy or sell a house anywhere in Ontario, I am well connected with Royal LePage - Canada's Real Estate Company. My primary focus is in the communities of Georgetown, Glen Williams, Acton, Erin, Hillsburgh and Rockwood, but also service Caledon, Milton, Oakville, Burlington, Mississauga and Brampton. From the very start of your search to the day of closing - whether it is a house, townhouse, condo, cottage, farm or commercial property that you are looking to buy or sell - I will be there to assist you with all your Real Estate needs.

You can feel confident you have made the right choice to work with me and my team. I look forward to working together with you to ensure this transition is as smooth as possible for you.

LISA HARTSINK

Broker of Record
Compassion Led Realty Team



MCGILLIVRAY™
Trusted
Erin & Hillsburgh, Ontario





LISA HARTSINK BROKER

COMPASSION LED REALTY TEAM



COMPASSION · INTEGRITY · PERFORMANCE

lisa@lisahartsink.com | 905.873.9944 | LisaHartsink.com



COLDWELL BANKER

**ELEVATE REALTY,
BROKERAGE**

