



HARTSINK BROKER

COMPASSION LED REALTY TEAM



6 Queen Street
Georgetown

LISAHARTSINK.COM 905.873.9944

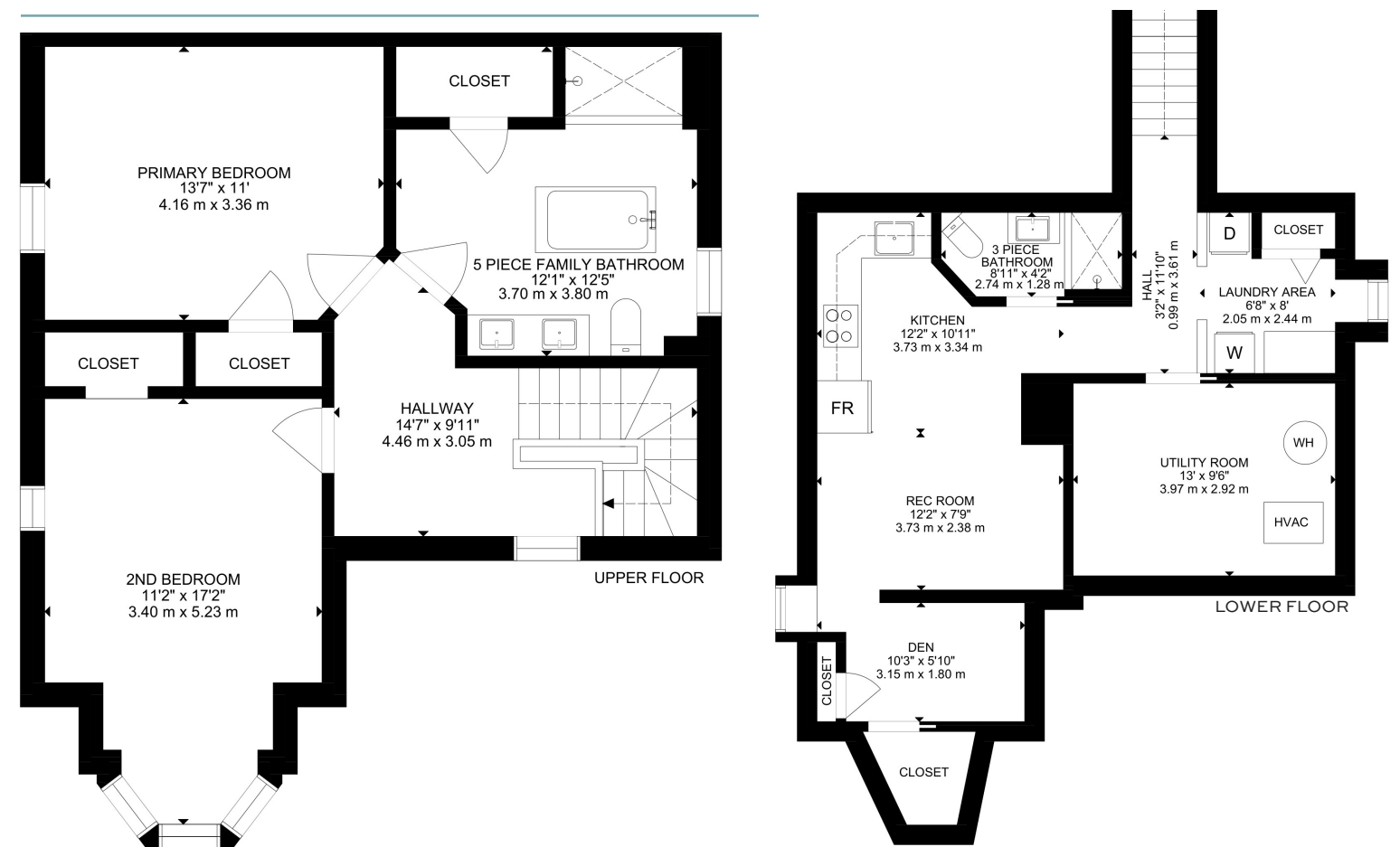
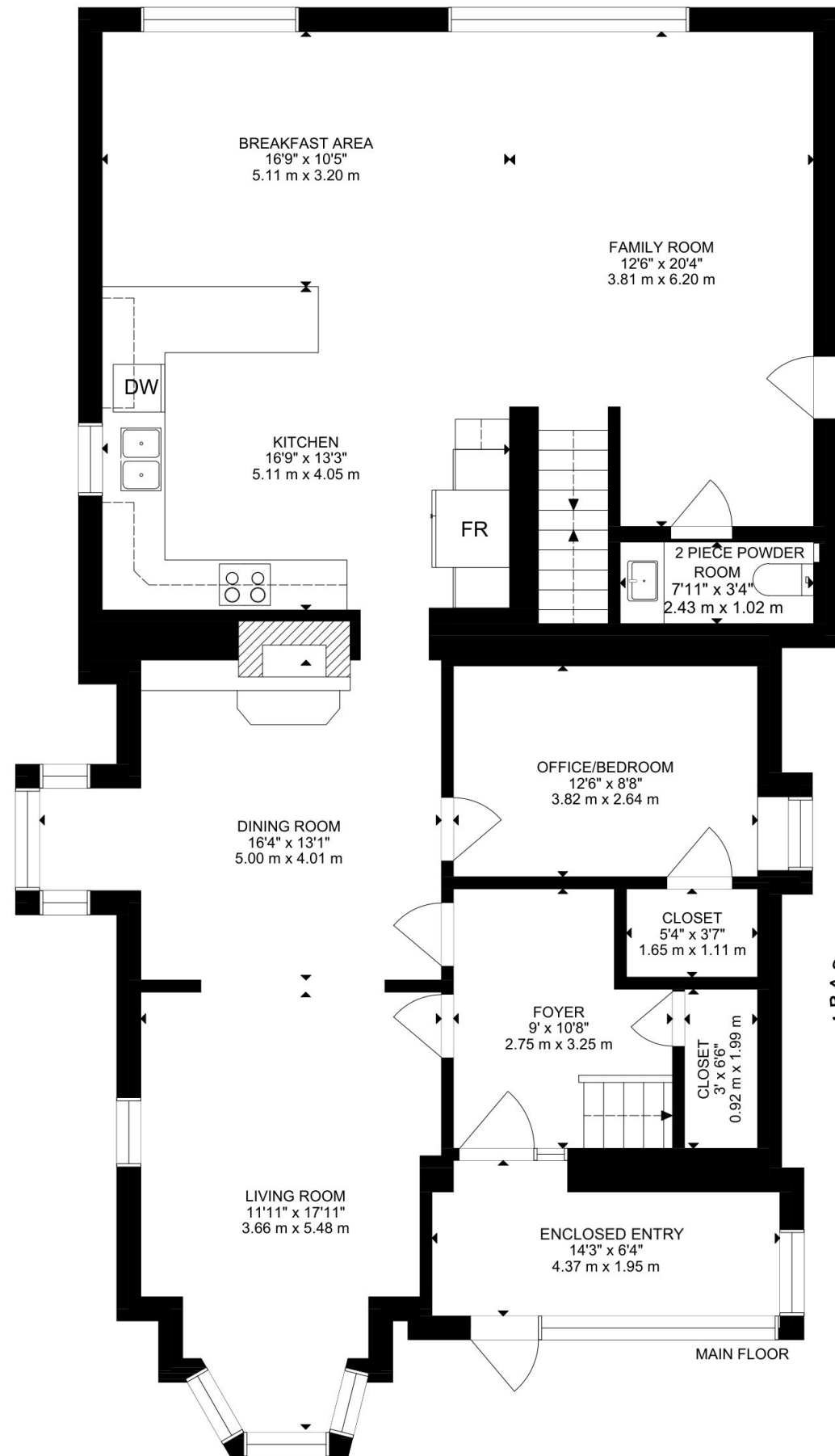












SCHOOLS

Halton District School Board		Halton Catholic District School Board	
ENGLISH			
PK - GR05	Pineview PS	PK - GR08	St. Brigid CES
GR06 - GR08	Stewarttown Middle	GR09 - GR12	Christ the King CSS
GR09-GR12	Georgetown District HS		
FRENCH IMMERSION			
K - GR06	ÉÉ Dayne-Adam	PK - GR06	ÉÉC de Sacré-Coeur-Georgetown
GR07 - GR012	ÉS Jeunes sans frontières	GR07 - GR12	ÉSC Sainte-Famille

School boundary information can be confirmed at:
<https://www.hdsb.ca/schools/Pages/Find-My-Local-School.aspx>
<https://schoolplanning.hcdsb.org/find-your-school/>

HOUSE FEATURES

EXTERIOR

- Victorian-inspired 2 Storey
- Stone Exterior
- Heritage designation
- Driveway - 2 car single tandem

FRONT YARD

- Stone walkway
- Open front porch with Jolack metal railing
- Enclosed entry with glass paneling and stone interior

INTERIOR

MAIN LEVEL

- 10 ft ceilings
- Full-sized original base boards & trim
- Deep set windows

FRONT FOYER

- Single door entry with door light and transom window
- Hardwood flooring
- Chandelier
- Wood french doors to living room
- Closet

LIVING ROOM

- Hardwood flooring
- Arched wall
- Bay window overlooking front yard
- Large window overlooking side yard
- Chandelier
- Crown mouldings

DINING ROOM

- Hardwood flooring
- Stone fireplace with wood insert
- Chandelier
- Crown mouldings
- Box bay window overlooks side yard

OFFICE/BEDROOM

- Hardwood flooring
- Overlooking side yard
- Chandelier

- Tongue-and-groove wood panel
- wainscoting
- Walk-in closet

2 PIECE POWDER ROOM

- Tile flooring
- Stone counter
- Upgraded vanity light

KITCHEN

- Hardwood flooring
- Shaker-style cabinets
- Granite countertops
- Tiled backsplash
- Sit up breakfast bar
- Double copper sink
- Built-in stainless steel microwave
- Beverage and Wine fridge
- Pendant lights
- Under cabinet lighting
- Window overlooking side yard

BREAKFAST AREA

- Hardwood flooring
- Window overlooking back yard
- Pendent Light

FAMILY ROOM

- Hardwood flooring
- Picture window overlooking back yard
- Open concept Kitchen Family Room
- Pot Lights
- Crown mouldings
- Walkout to side yard

UPPER LEVEL

HALLWAY

- Broadloom
- Large window overlooking front yard
- Ceiling fan

PRIMARY BEDROOM

- Hardwood flooring
- Walk-in closet
- Window overlooking side yard

2ND BEDROOM

- Original hardwood flooring
- Bay window overlooking front yard
- Window overlooking side yard
- Walk-in closet

5 PIECE FAMILY BATHROOM

- Tile flooring
- Oversized closet
- Free-standing soaker tub
- Walk-in shower with Glass door
- Double sinks in built-in vanity
- Crown mouldings
- Window overlooking side yard

LOWER LEVEL

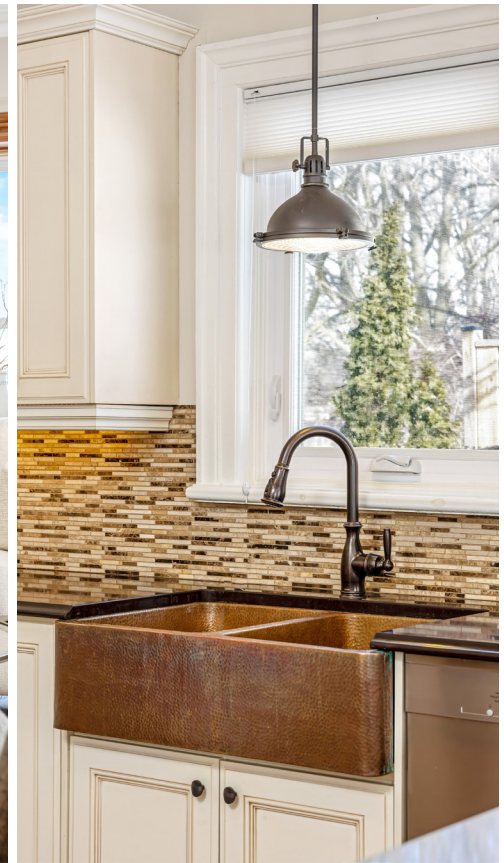
REC ROOM

- Vinyl flooring
 - Pot lights
- ### LAUNDRY AREA
- Folding counter
 - Built-in cabinets
 - Closet
 - Above grade window overlooking side yard



Note: The information contained herein has been provided by the home owner and is to be verified by the Buyer.

HOUSE FEATURES



ADDITIONAL FEATURES

- Bryant Furnace: Gas Forced Air ~Aprox 20 years old
- Central AC (2016)
- Reliance, Gas hot water tank (Rental) (2025)
- Water softener - Reem (Owned)
- Electrical Panel - 100 Amps
- Windows - Upper level (2021)
- Windows - Main floor (Varies)
- Asphalt shingles 2009 (aprox.)

SCHOOLS

Halton District School Board		Halton Catholic District School Board	
ENGLISH			
JK - GR05	Harrison PS	JK - GR08	Holy Cross CES
GR06 - GR08	Centennial PS	GR09 - GR12	Christ the King CSS
GR09-GR12	Georgetown District HS		
FRENCH IMMERSION			
GR02 - GR05	George Kennedy	GR01 - GR05	St. Catherine of Alexandria CES
GR06 - GR08	Centennial PS	GR06 - GR08	St. Brigid CES
GR09-GR12	Georgetown District HS	GR05 - GR08	St. Francis of Assisi CES
		GR09 - GR12	Christ The King CSS

School boundary information can be confirmed at:
<https://www.hdsb.ca/schools/Pages/Find-My-Local-School.aspx>
<https://schoolplanning.hcdsb.org/find-your-school/>



HARTSINK BROKER
COMPASSION LED REALTY TEAM



COLDWELL BANKER

**ELEVATE REALTY,
BROKERAGE**

MCNE
MASTER CERTIFIED NEGOTIATION EXPERT



info@lisahartsink.com | 905.873.9944 | LisaHartsink.com