



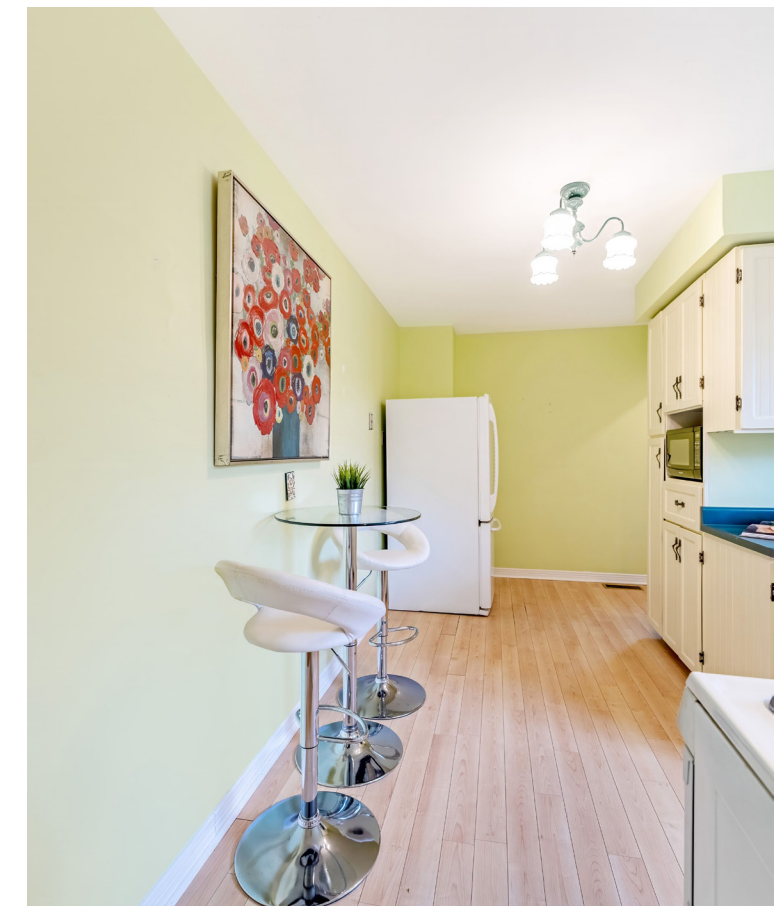
# HARTSINK BROKER

COMPASSION LED REALTY TEAM



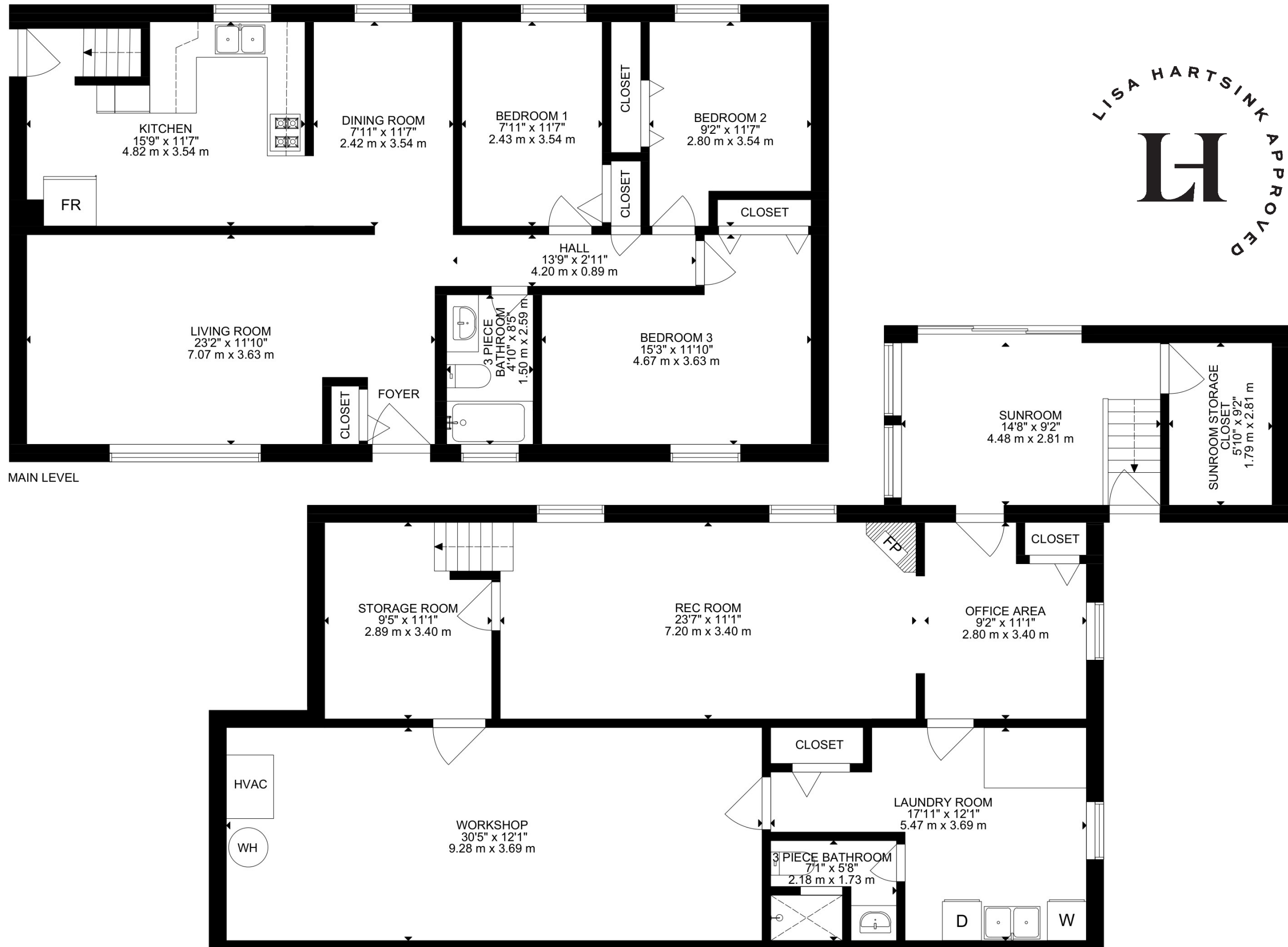
65 John Street  
*Georgetown*

LISAHARTSINK.COM 905.873.9944









# HOUSE FEATURES

## EXTERIOR

### FRONT YARD

- Gravel driveway, double wide with 4 car parking
- Perennial Garden
- Covered front porch

### GARAGE

- Single car port
- 2 car parking tandem

### BACKYARD

- Large backyard
- Interlock patio
- Wood deck with stairs leading to yard
- Greenhouse for gardening
- Mature trees and established landscaping
- Garden beds with stone edging
- Fenced

## INTERIOR

### MAIN LEVEL

#### FRONT ENTRANCE

- Hardwood flooring
- Double closet
- Screen door
- Single door with glass insert
- Pendant light

#### LIVING ROOM

- Hardwood flooring
- Picture window overlooking front yard

#### DINING ROOM

- Hardwood flooring
- 1 window overlooking backyard
- Chandelier light

#### KITCHEN

- Laminate flooring
- 1 window overlooking backyard
- Small chandelier
- Maytag white gas stove
- GE white single door fridge with freezer drawer
- Electrohome white range hood
- Panasonic white microwave
- Cream cabinets with dark hardware

- Eat in kitchen
- Potlights above kitchen sink
- Laminate counters
- Double sink
- Side door walk out to side yard & back yard
- Stairs to basement

#### HALLWAY

- Hardwood flooring
- Semi flush light fixture
- Linen closet with deep drawers

#### PRIMARY BEDROOM

- Hardwood flooring
- 1 window overlooking backyard
- Semi flush mount light
- Double closet, double louvered door

#### 2ND BEDROOM

- Hardwood flooring
- 1 window overlooking backyard
- Semi flush mount light
- Single double closet, double louvered door

#### 3RD BEDROOM

- Hardwood flooring
- 1 window overlooking backyard
- Semi flush mount light
- Single double closet, double louvered door

#### 3 PIECE BATHROOM

- Tub/shower combo
- Single sink
- Built in vanity
- Vanity light
- Window frosted overlooking front yard
- Tile flooring

#### LOWER LEVEL

#### REC ROOM

- Broadloom
- 2 Large above grade windows overlooking backyard
- Wall sconces
- Half wall wood paneling
- Exposed dark wood beams

- Gas fireplace with exposed brick
- Walk out to sunroom

#### OFFICE AREA

- Vinyl flooring
- 1 window overlooking side
- Walk out to sunroom

#### LAUNDRY ROOM

- Vinyl flooring
- Wood panelled walls
- Double closet
- Laundry sink double
- Folding table
- Cabinets above
- Above grade window overlooking side
- Inglis front load dryer
- Maytag topload washer

#### 3 PIECE BATHROOM

- Tile flooring
- Step in shower with glass door
- Tile surround
- Semi flush mount light

#### WORKSHOP

- Storage

#### SUNROOM

- Red Ceramic tile flooring
- Double sliding door walk out to back yard
- Large windows overlooking backyard
- Wood staircase with railing leading to car port
- Cedar wood panelled upper walls
- Vaulted cedar wood plank ceiling
- Storage room



Note: The information contained herein has been provided by the home owner and is to be verified by the Buyer.

# HOUSE FEATURES

## UTILITIES / ADDITIONAL INFO

- Heating Gas Furnace Lincoln
- HWT Reliance Rental 2024
- Electrical panel: Fuses, 100 amp
- Central Vacuum
- Roof, asphalt shingle



# SCHOOLS

Halton District School Board		Halton Catholic District School Board	
ENGLISH			
JK - GR05	Glen Williams PS	JK - GR08	Holy Cross CES
GR06 - GR08	Centennial PS	GR09 - GR12	Christ The King CSS
GR09 - GR12	Georgetown District SS		
FRENCH IMMERSION			
GR02 - GR05	George Kennedy PS	GR01 - GR05	St. Catherine of Alexandria CES
GR06 - GR08	Centennial PS	GR06 - GR08	St. Brigid CES
GR09 - GR12	Georgetown District SS	GR09 - GR12	Christ The King CSS

School boundary information can be confirmed at:  
<https://www.hdsb.ca/schools/Pages/Find-My-Local-School.aspx>  
<https://schoolplanning.hcdsb.org/find-your-school/>



# HARTSINK BROKER

COMPASSION LED REALTY TEAM



**COLDWELL BANKER**

**ELEVATE REALTY,  
BROKERAGE**

**MCNE**  
MASTER CERTIFIED NEGOTIATION EXPERT



info@lisahartsink.com | 905.873.9944 | LisaHartsink.com