



# LISA HARTSINK BROKER

COMPASSION LED REALTY TEAM



50A Wylie Circle  
*Georgetown*

LISAHARTSINK.COM 905.873.9944





LISA HARTSINK

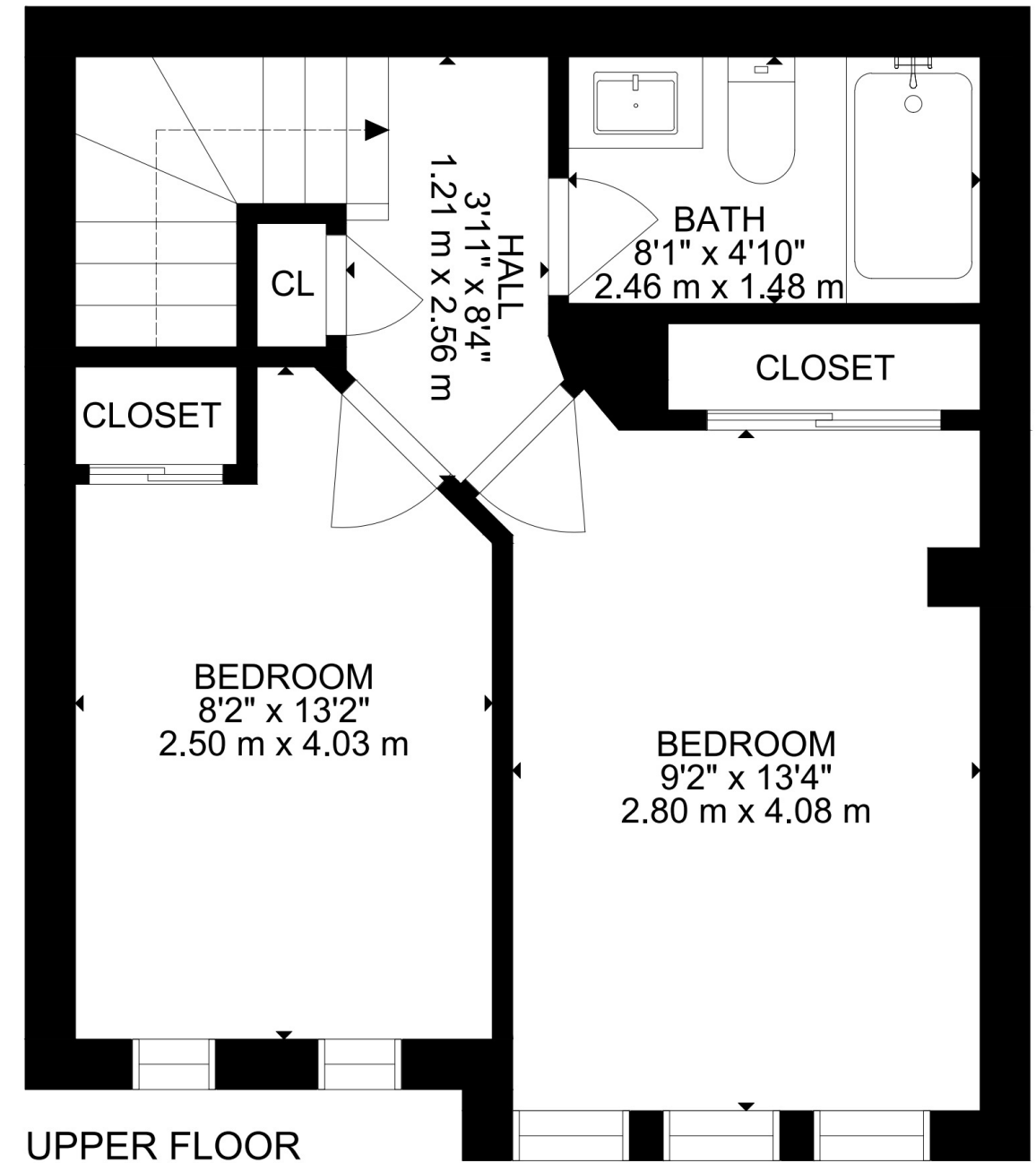
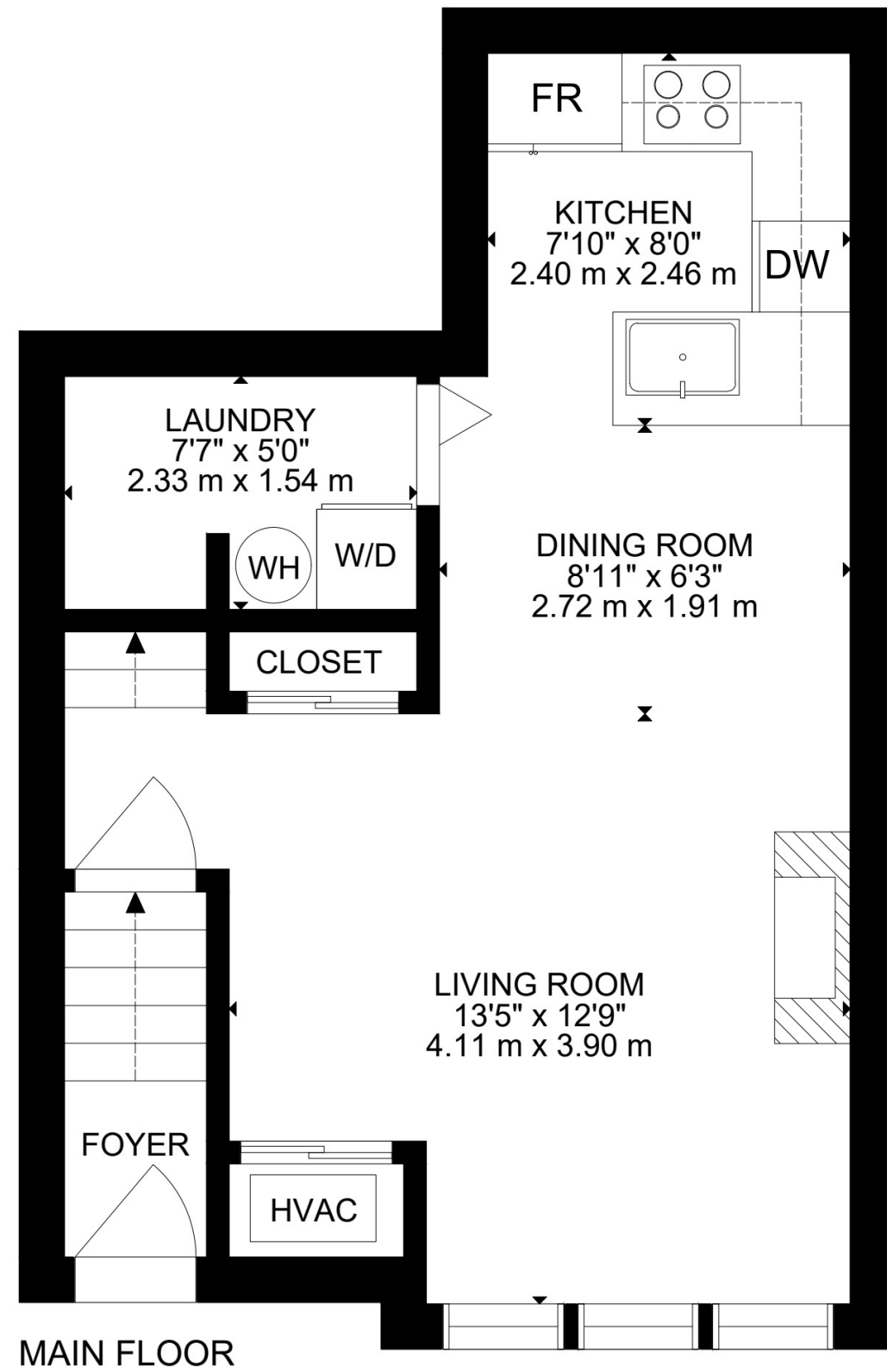


LISA HARTSINK



LISAHARTSINK.COM • 905.873.9944

LISAHARTSINK.COM • 905.873.9944



# HOUSE FEATURES

## INTERIOR MAIN LEVEL

### FRONT ENTRANCE

- Vinyl flooring (2026)
- Front door with screen door
- Modern flush mount light fixture
- Double sliding door coat closet

### LIVING ROOM

- Vinyl flooring (2026)
- Three windows overlooking the front
- Gas fireplace with floor to ceiling feature wall
- Painted brick surround with custom mantel

### DINING ROOM

- Vinyl flooring (2026)
- Modern chandelier with linen drum shade

### KITCHEN

- Vinyl flooring (2026)
- Modern flush mount light fixture
- Whirlpool stainless steel electric stove
- Whirlpool stainless steel fridge
- Bosch stainless steel dishwasher
- Bosch white range hood
- White tile backsplash
- Laminate countertop
- White cabinetry with brass hardware

### DINING ROOM

- Engineered hardwood flooring
- Built-in cabinetry & countertops
- Large window overlooking side yard

- Hunter Douglas blinds

- Pot lights

- Chandelier

## UPPER LEVEL

### HALLWAY

- Vinyl flooring (2026)
- Ceiling fan and modern flush mount light fixture
- Single linen closet

### PRIMARY BEDROOM

- Vinyl flooring (2026)
- Three windows overlooking the front
- Double closet with sliding doors

### 2ND BEDROOM

- Vinyl flooring (2026)
- Two windows overlooking the front
- Semi flush mount drum shade light fixture

- Single closet with sliding door

### 4 PIECE FAMILY BATHROOM

- Tub/shower combo with tile surround
- Single vanity with double door storage and marble countertop
- Updated chrome vanity light fixture and bathroom mirror
- Freshly updated (2026)

### LAUNDRY ROOM / UTILITY CLOSET (MAIN LEVEL)

- Vinyl flooring (2026)
- Stacked GE washer and dryer (white)
- Rheem hot water tank
- Ecosmart water softener

### ADDITIONAL FEATURES:

- Heating: Gas forced air furnace (owned)
- Cooling: Forced air
- Rheem hot water tank
- Ecosmart water softener



Note: The information contained herein has been provided by the home owner and is to be verified by the Buyer.

# HOUSE FEATURES



Note: The information contained herein has been provided by the home owner and is to be verified by the Buyer.

## SCHOOLS

Halton District School Board		Halton Catholic District School Board	
<b>ENGLISH</b>			
JK- GR08	Glen Williams Public School	JK - GR08	Holy Cross Catholic School
GR06 - GR08	Centennial Public School	GR09 - GR12	Christ The King CSS
GR09-GR12	Georgetown District High School		
<b>FRENCH IMMERSION</b>			
JK - GR05	ÉÉ Dyane-Adam	JK - GR08	ÉÉC du Sacré-Coeur
GR06 - GR12	ÉS Jeunes sans frontières	GR09 - GR12	ÉSC Sainte Famille (Meadowvale)

School boundary information can be confirmed at:  
<https://www.hdsb.ca/schools/find-local-school/>



# LISA HARTSINK BROKER

COMPASSION LED REALTY TEAM



**COLDWELL BANKER**

**ELEVATE REALTY,  
BROKERAGE**



[info@lisahartsink.com](mailto:info@lisahartsink.com) | 905.873.9944 | [LisaHartsink.com](http://LisaHartsink.com)