



LISA HARTSINK BROKER

COMPASSION LED REALTY TEAM



6 Metcalfe Court

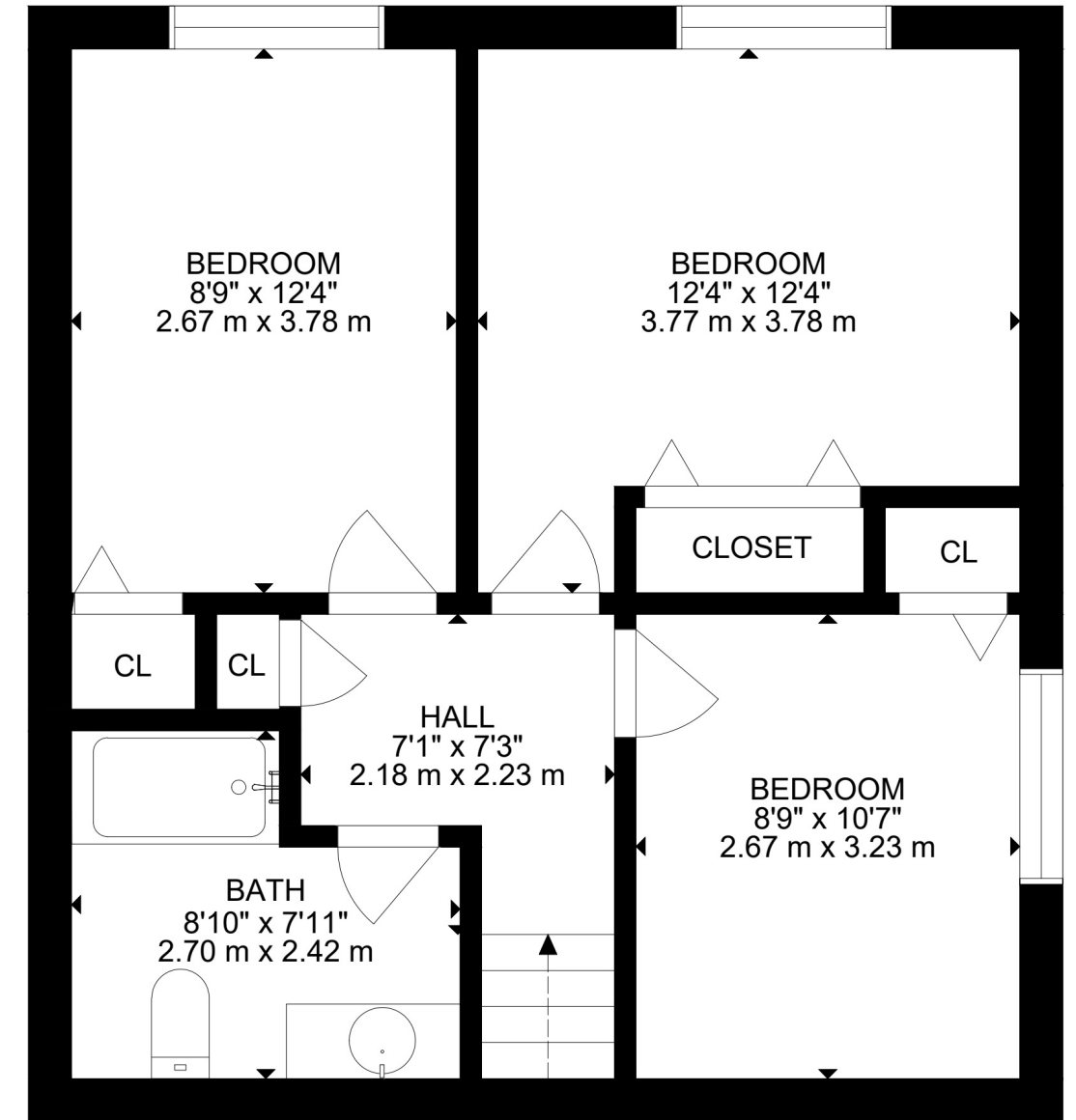
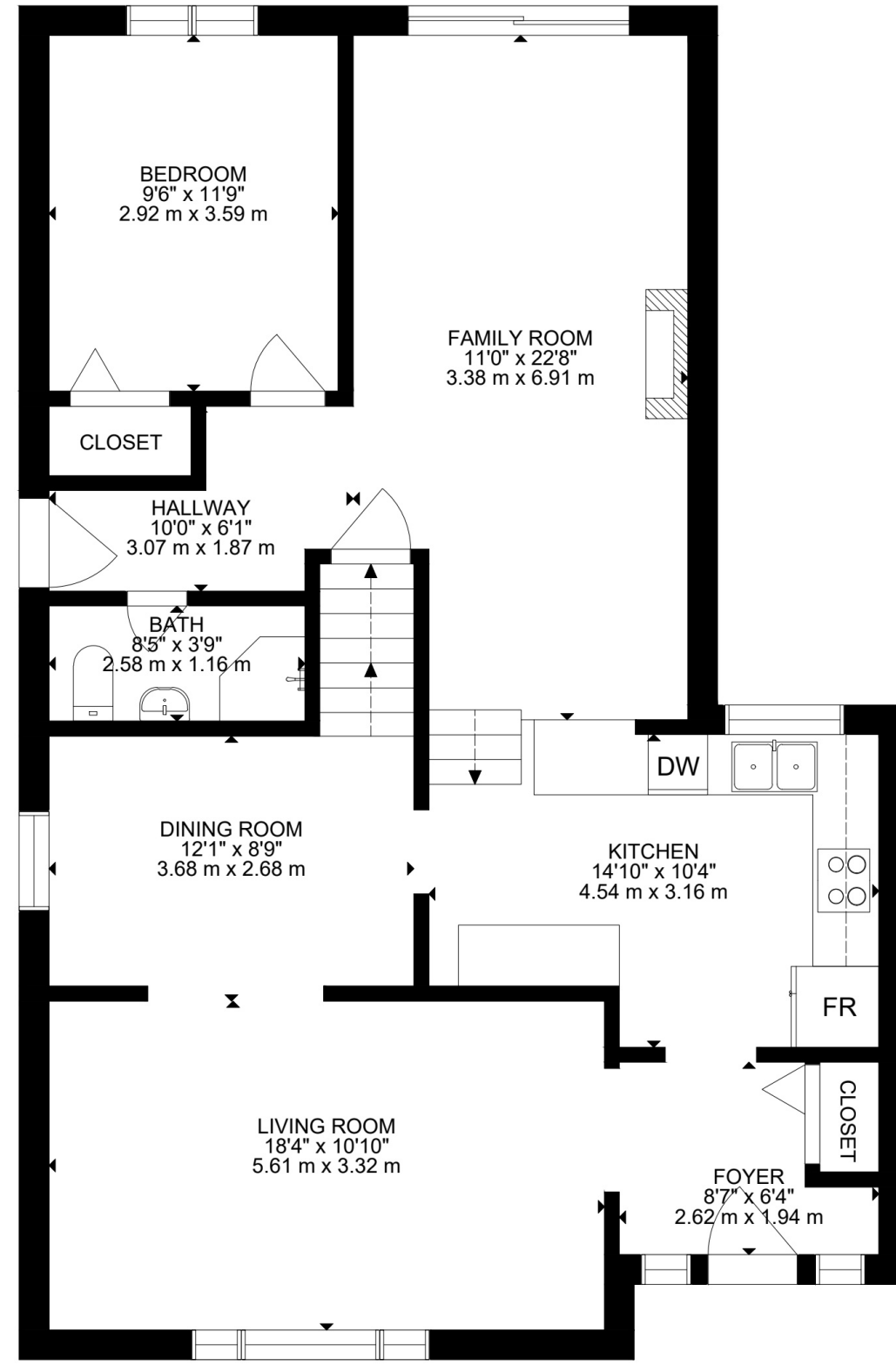
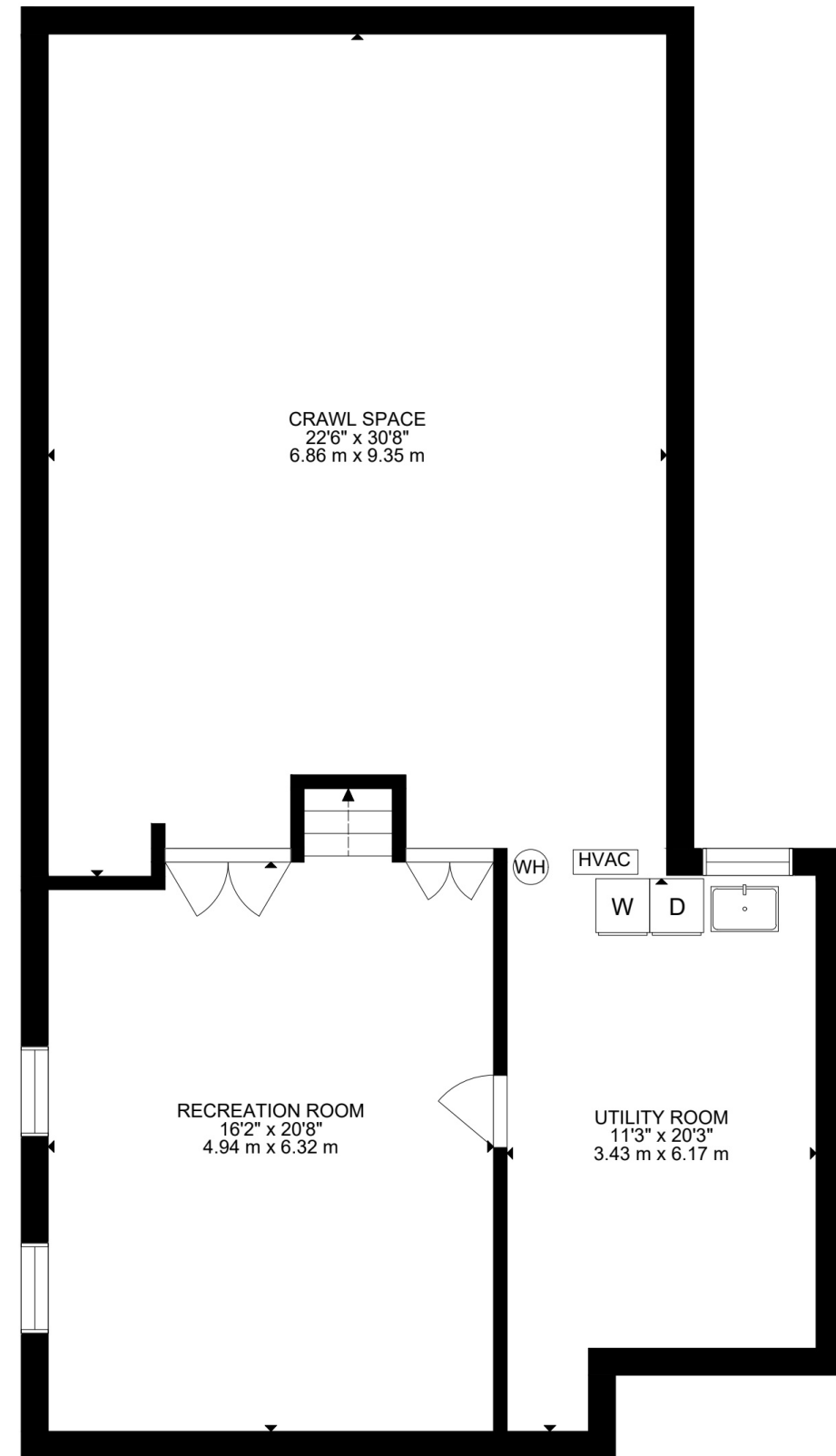
Georgetown

LISAHARTSINK.COM 905.873.9944









HOUSE FEATURES

EXTERIOR

FRONT EXTERIOR

- Brick and siding
- Landscaped front yard
- Asphalt-paved driveway
- Interlock
- Front railing
- Asphalt shingle roof (2016)

BACKYARD

- Landscaped yard
- Large wooden deck with railing
- Gazebo/ pergola structure
- Concrete patio pad

INTERIOR

MAIN LEVEL

FRONT FOYER

- Laminate flooring
- Single closet
- Flush-mount light fixture
- Open-concept layout overlooking kitchen and living areas
- Front door with decorative glass insert and sidelights

KITCHEN (UPDATED ~2024)

- Laminate flooring
- Window above sink overlooking backyard with blinds
- Built-in pantry
- Coffee/tea station with soft-close drawers and additional storage
- Refinished cabinetry and drawers
- Quartz countertops
- Quartz backsplash
- Decorative glass cabinet door insert
- Stainless steel double sink
- Under-cabinet lighting
- Dimmable pot lights
- Stainless steel appliances
- Open to foyer, dining room and lower-level family room

DINING ROOM

- Broadloom flooring
- Window overlooking side yard with zebra blinds
- Crown moulding
- Chandelier
- Wallpaper accent wall
- Open to kitchen and living room

LIVING ROOM

- Broadloom flooring
- Large front window overlooking front yard with blinds
- Crown moulding
- Switch-controlled lighting
- Open to foyer and dining room

LOWER LEVEL

FAMILY ROOM

- Broadloom flooring
- Laminate flooring at side entrance
- Sliding door with blinds and walkout to backyard deck
- Side entrance with access to backyard
- Gas fireplace with brick surround and wood mantel
- Wainscoting
- Wall sconces
- Open to kitchen area

BEDROOM 4

- Broadloom flooring
- Window overlooking backyard with blinds
- Single closet
- Flush-mount light fixture

3 PIECE BATHROOM

- Laminate flooring
- Window overlooking side yard
- Stand-up shower
- Tile accent wainscoting
- Vanity light and flush-mount fixture

UPPER LEVEL

PRIMARY BEDROOM

- Hardwood flooring
- Window overlooking backyard with blinds
- Large closet with built-in shelving
- Access to attic hatch
- Ceiling fan with light

BEDROOM 2

- Hardwood flooring
- Window overlooking backyard with built-in blinds
- Single closet
- Flush-mount light fixture

BEDROOM 3

- Hardwood flooring
- Window overlooking backyard with blinds
- Single closet
- Flush-mount light fixture

4 PIECE MAIN BATHROOM

- Laminate flooring
- Window overlooking side yard
- Tub/shower combination with tile surround
- Tile wall accents
- Vanity light

BASEMENT

RECREATION ROOM

- Luxury vinyl flooring
- Two windows overlooking side yard
- Two crawl-space access doors
- Drop ceiling with integrated lighting

LAUNDRY/UTILITY ROOM

- Concrete flooring
- Window overlooking backyard
- Laundry sink
- Maytag top-load washer
- Kenmore dryer

ADDITIONAL FEATURES:

- 100-amp electrical service
- Furnace: Bryant (2017)
- Air Conditioner: Goodman (1996)
- Water Softener (Culligan)
- Humidifier: AprilAire
- Hot Water Tank: Bradford White (rental through Reliance)



Note: The information contained herein has been provided by the home owner and is to be verified by the Buyer.

HOUSE FEATURES



SCHOOLS

Halton District School Board		Halton Catholic District School Board	
ENGLISH			
JK- GR05	George Kennedy Public School	JK - GR08	St. Francis of Assisi
GR06 - GR08	Centennial Public School	GR09 - GR12	Christ the King CSS
GR09-GR12	Georgetown District HS		
FRENCH IMMERSION			
GR02 - GR05	George Kennedy Public School	JK - GR06	ÉÉC du Sacré Coeur
GR06 - GR08	Centennial Public School	GR07 - GR12	ÉSC Sainte Famille
GR09 - GR12	Georgetown District HS		

School boundary information can be confirmed at:
<https://www.hdsb.ca/schools/find-local-school/>

Note: The information contained herein has been provided by the home owner and is to be verified by the Buyer.



LISA HARTSINK BROKER

COMPASSION LED REALTY TEAM



COLDWELL BANKER

**ELEVATE REALTY,
BROKERAGE**



info@lisahartsink.com | 905.873.9944 | LisaHartsink.com